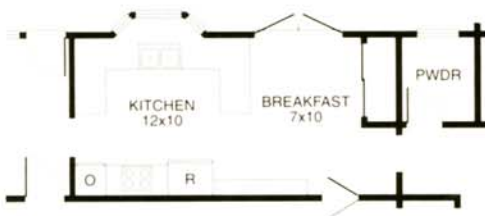




FLOOR PLAN FIXES

Continued from page 110



BEFORE



AFTER

A big bay window was the best thing about this kitchen in its former state. But narrow peninsulas under light-blocking hanging cabinets kept that side of the kitchen feeling cramped and hard to use. To make matters worse, the cooktop and refrigerator were too far from the sink to be convenient yet too close to each other to allow enough counter space. To improve the situation, the kitchen traded places with the breakfast room and annexed an expendable powder room. New peninsulas are twice as wide. One accommodates base cabinets that are accessible from both sides and a new, wide cooktop; the other provides additional seating space. A longer refrigerator wall incorporates a second sink and more counter space. ▣

Photographer Jay Graham
Illustrator Carson Ode
Designer Sandra Bird
Field editor Helen Heitkamp

RESOURCES BEGIN ON PAGE 132.